



# SHARMA INFRATECH GEOTECH & MATERIAL TESTING LAB

Accredited by : NABL  
National Accreditation Board for Testing and Calibration Laboratories  
as per ISO/IEC: 17025:2017  
(A Constituent Board of Quality Council of India)



## OUR ACCREDITATIONS



TC-12078



मानक: पथप्रदर्शक:  
Bureau of Indian Standards



MICRO, SMALL & MEDIUM ENTERPRISES  
सूक्ष्म, लघु एवं मध्यम उद्यम

## ABOUT US

We Sharma Infratech Geotech & Material Testing Lab provide one window solution to quality control management for all types of geotechnical testing projects. We cover all construction materials testing and other related tests in laboratory as well as field test from scratch to completion of the project along with design management support tests to concerned clients, contractors, designers, developers, engineers etc. We also provide quality control consultancy services to all types of projects for roads, highways, commercial, industrial/automobile and residential projects, irrigation, urban infrastructures, bridges, tunnel, water supply and sewerage projects.

We are having a team of professional and experienced engineers, expertise, lab technician and supporting staff. The tests are conducted with up to date version of equipments & relevant latest guidelines and specification.

## ABOUT CEO AND FOUNDER:-

### Er. I.D Bhardwaj

CEO & Founder of the company is qualified Civil Engineer graduated from Shivaji University Maharashtra (India) in year 2002. Previously worked with foreign companies (MNC's) Like Nippon KOEI, JICA (Japan International Cooperation Agency) and Long Jian (China Based Company) as Design Engineer, having working experience of 20 years. Hereafter working with MNC's initiated own venture as technical services provider in state of Himachal Pradesh.

### OUR VISION:-

To be the partner for Quality Assurance in field of testing.

### OUR MISSION:-

We will provide reliable and accurate results, using innovative solutions, through affordable analytical testing.

### QUALITY ASSURANCE:-

Quality Assurance program ensures customers data meets national as well as international quality standard. We monitor quality through participation in various ILC (Inter Laboratory Comparison) and proficiency testing(PT). Our lab use concepts of Total Quality Management System (TQM), which continuously refines laboratory processes based on continuous quality feedback and single window for customer's query.

### Our Certification:-

We Sharma Infratech Geotech & Material Testing Lab has an in house testing laboratory which is accredited under **NABL (National Accreditation Board for Testing and Calibration Laboratories)TC-12078** in accordance with the Indian standards **ISO/IEC 17025 : 2017** for facilities in the field and lab testing.



## ROLE OF TESTING:

### **Importance Of Soil Investigation & Material Testing: -**

The purpose of a soil investigation is to determine the engineering properties of soils at the proposed site. Soil data is used to: Predict the behaviour of the foundation. Minimize uncertainties in foundation design.

In view of recent disaster experienced by state of Himachal Pradesh due to large land slides resulting in loss of human life & properties necessitates the importance of soil investigation & material testing in order to have safe & stable construction.

## IMAGES OF DESTRUCTION



### **Reason For Failure: Un-explored Sub Soil Foundation Strata**

**Modern Equipment and Infrastructure:** Sharma Infratech Geotech & Material Testing Lab is well equipped with state of art machinery and equipments. The test are profound on modern machinery by highly qualified analyst with best infrastructure in class.

**OUR SERVICIES:** Sharma Infratech Geotech & Material Testing Lab offers accurate cost-effective mechanical analysis in accordance with American society of testing and material (ASTM), international standard organization (ISO), Ministry of Road Transport & Highways (MoRT&H) and Indian Standards (IS) for specific registered test.

#### **Construction Material Testing**

In today's global markets and increasing emphasis on quality, need for laboratory data has increased many folds and top of that accuracy and reliability of data is another concern

We assure that the services rendered by us are prompt, reliable, precise and on time testing services for wide range of construction materials. The tests from pre-construction phase till post-construction are carried out in accordance with Indian standards and international standards.

Testing services are equipped with highly accurate calibration equipment and perfect environmental conditions.

Our engineers, team having vast experience and understanding of material testing, construction materials and construction practice. Our team help our clients anticipate and minimize potential issue and delays.

## SOIL AND MATERIAL TESTING SERVICES WE OFFER:

Sharma Infratech Geotech & Material Testing Lab are into Analysis of complete parameters of building/Construction material, Standard Penetration Test (SPT) of Soil, Geotechnical Engineering, Material, Survey and Non-Destructive testing consultant for Buildings, Bridges, Roads & Highways and other Civil Engineering structures to identify the durability, strength and sustainability of the products or material which are being used in construction of roads, highway, building etc.

### GEOTECHNICAL INVESTIGATION: -

- Standard Penetration Test (SPT)
- Filed Density Test – By Sand Replacement
- Filed Density Test – By Core Cutter Method
- Dynamic Core Penetration Test (DCPT)
- Static Core Penetration Test (SCPT)
- Subsurface Investigation for Foundation

### Laboratory Test: -

- Soil & Rock
- All type of soil and rock test in accordance with IS code, ASTM and as per MoRT&H.

### Soil Test Includes: -

- GSA, Liquid Limit & Plastic Limit, Specific Gravity
- Compaction Test – Light
- Compaction Test – Heavy
- Shrinkage Limit Test
- Direct Shear Test
- Natural Moisture Contest
- CBR (California Bearing Ratio Test)
- Free Swell Index Test
- Triaxial Test
- Consolidation Tests

### Rock Test Includes: -

- Gravity Strength Test
- Point Load Strength Test
- UCS
- Water Absorption & Porosity Test
- Specific Gravity Test

### Bitumen & Asphalts Allied material: -

- Specific Gravity Test
- Penetration Test
- Flash & Fire Point Test
- Softening Point Test
- Absolute & Kinematic Viscosity Test
- Marshall Stability Test
- Bitumen Binder Test

### Concrete Testing: -

- Compressive Strength of Concrete Cubes (Various Grade)

### Aggregate Testing: -

- Flakiness & Elongation Index
- Specific Gravity
- Particle Size Analysis



### Non-Destructive Testing: -

- Rebound Hammer
- Ultrasonic Pulse Velocity
- Core Cutting
- Pile Integrity Test (PIT)

### Mechanical Testing:-

- Coarse Aggregate & Fine Aggregate
- Bitumen & Allied Materials
- Concrete Core & Cubes
- Autoclave Aerated Concrete Block (ACC Block) Design of Concrete
- Bricks Clay & Bricks (Fly Ash, Lime & Sewer)
- Concrete Block for Paving (Paver Block)

## CONCRETE MIX DESIGN

We are conducting all type of concrete mix design with respect to checking and verification of property of concrete ingredient as per Indian standards/relative specifications etc. It should be economical, durable and workable

- Ordinary Concrete
- Self-leveling self-compacting concrete (SLSC)
- Pavement Quality Concrete (PQC)
- Pumpable concrete & more
- High-grade concrete
- Dry lean concrete (DLC)
- Early Strength Concrete



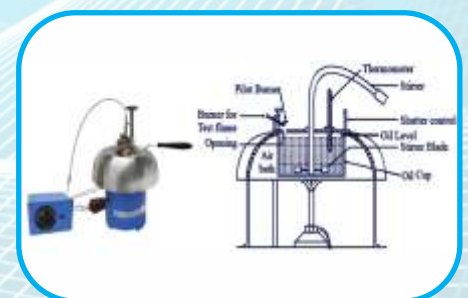
## SOIL ANALYSIS TESTING SERVICES

Soil testing solutions offered help in testing overall health of the soil. We analysis all type of soil for use in engineering purposes to verifying its property as per the set standards by our experienced, our calibrated testing equipment's and skilled team members.



## BITUMEN TESTING SERVICES

Our laboratory delivering advanced solutions for assessing the consistency and suitability of bitumen through various type of test methods.



## BRICK AND BLOCK TESTING SERVICES

We provide a wide array of brick block testing services that help in meeting the construction needs of our clients. Our brick, block testing services include accuracy for durability and strength.



## BITUMEN MIX DESIGN

We have a fully-fledged laboratory with all the modern calibrated apparatus and facilities to carry out all the tests of bitumen, modified bitumen, bituminous mixes as per Indian and international standards. It should be economical, durable and workable.



## NON-DESTRUCTIVE TESTING OF CONCRETE

The non-destructive test is a method of testing existing concrete structures to assess the strength and durability of the concrete structure. In the non-destructive method of testing, without loading the specimen to failure (i.e. Without destructing the concrete) we can measure the strength of concrete. Nowadays this method has become a part of the quality control process. This method of testing also helps us to investigate crack depth, microcracks and deterioration of concrete.



## OUR PROJECT MANAGEMENT CONSULTANCY SERVICE

We undertake a planned series of activities and design them in synchronization with our customer's requirements, whenever we go on board with new projects. This includes overall planning, coordination, monitoring and controlling of a project from inception to completion in order to produce a functionally and financially viable project that will be completed on time, within authorized cost and to the required quality standards. Our team having professional Knowledge, Skills, and Experience at various stages of construction good practices and motivation towards quality management system Construction industry like other businesses, progress by keeping pace with technology, new materials and construction techniques are being tried and proven daily, as a results engineers, the supervisor is continually having to update their knowledge and skills to maintain their proficiency. We also conducted training program for construction super vision development.



## SOME OF OUR COMPLETED PROJECTS

1. Geotechnical Investigation of National Highway Authority of India (NHAI) Guest House at Dehar, Mandi HP.
2. Geotechnical Investigation of National Highway Authority of India (NHAI) Guest House at Bhattakuffar, Shimla HP.
3. Geotechnical Investigation of Indian Oil Corporation Ltd's Retail Outlet at Himmatpur Dabli, Solan, HP.
4. Geotechnical Investigation of Hindustan Petroleum Corporation Ltd's Retail Outlet at Shillai, Sirmour, HP.
5. Geotechnical Investigation of Victory Estate at Dhara Ki Dhar, Solan, HP.

6. Geotechnical Investigation of Tethy's Himalya at Naina Tikker, Sirmour, HP.
7. Geotechnical Investigation of Kamakhya Hospitality at Dharmshala, Kangra, HP.
8. Geotechnical Investigation of Indian Oil Corporation Ltd's Retail Outlet at Dharampur, Solan, HP.
9. Geotechnical Investigation of Indian Oil Corporation Ltd's Retail Outlet at Khaneri, Rampur, HP.
10. Geotechnical Investigation of Indian Oil Corporation Ltd's Retail Outlet at Ghaghus, Bilaspur, HP.
11. Geotechnical Investigation of Reliance Jio BP Mobility Ltd's Retail Outlet at Nagwain, Mandi, HP.
12. Geotechnical Investigation of Gawar Construction Pvt. Ltd and many more.



## OUR VALUABLE CUSTOMERS

### Government Department

- National Highway Authority of India
- Northern Railway (Bhanupalli Bilaspur Railway)
- Baddi Barotiwala Nalagarh Development Authority
- WAQF Board Himachal Pradesh.

### Public Sector Undertaking

- Indian Oil Corporation Ltd
- Hindustan Petroleum Corporation Ltd.
- Bharat Petroleum Corporation Ltd.
- Irrigation and Public Health Department

### Private Organization

- Gawar Construction Pvt. Ltd.
- Intercontinental Consultants & Technocrats Pvt. Ltd.
- Hexa Consulting Engineers
- L.N Malviya Infra Projects Pvt. Ltd.
- Nokang Infra Pvt. Ltd.
- Nippon KOEI
- Reliance British Petroleum Mobility Ltd.
- Nayara Energy Ltd.
- Essar Oil
- NCC
- Bal Bharti Convent School
- Deventure Hotel & Resort Pvt. Ltd.
- Aditya Resorts
- Tibetan International School



### Also,Us:

Beside this we have been recognized by National Highway Authority of India (NHAI), Ministry of Road Transport and Highways (MoRT&H) National Highway, Indian Oil Corporation Ltd., Hindustan Petroleum Corporation Ltd., Bharat Petroleum Corporation Ltd., Reliance BP Mobility Limited, Nayara Energy Ltd. (also known as Essar Oil) Himachal Pradesh Public Works Department (HPPWD), Irrigation & Public Health (IPH), Jal Shakti Vibhag (JSV) Municipal Corporation (MC) and Town & Country Department (TCP) as a Engineering Consultant & Contractor for obtaining access permissions to all kind of residential/commercial/private properties along road side in the state.

# OUR ACCREDITATIONS



## YOUR BUILDING MATTERS MORE THAN ANYTHING

People - have children - in buildings  
People - fall in love - in buildings  
People - cry together - in buildings  
People - get together - in buildings  
People - are inspired - in buildings  
People - get married - in buildings

People - find safety - in buildings  
People - find faith-in buildings  
People - celebrate - in buildings  
People - stay warm - in buildings  
People - stay cool - in buildings  
People - are born - in buildings

People - worship - in buildings  
People - learn - in buildings  
People - laugh - in buildings  
People - work - in buildings  
People - live - in buildings  
People - die - in buildings

SO WHY TO IGNORE SAFE AND STABLE FOUNDATION

## SAMPLE COLLECTION CENTRES

- ❖ Sunder Nagar
- ❖ Ghumarwin
- ❖ Nahan
- ❖ Kullu
- ❖ Paonta Sahib
- ❖ Hamirpur
- ❖ Mandi
- ❖ Baddi
- ❖ Chamba
- ❖ Pathankot
- ❖ Gaggal, Kangra
- ❖ Shimla
- ❖ Rampur
- ❖ Una

## OUR OFFICE

### SHARMA INFRA TECH GEOTECH & MATERIAL TESTING LAB

GSTIN : 02AFAPS8736A1ZD

📍 Top Floor Above BPCL Petrol Pump, Near ISBT, Solan By Pass Road,  
Tehsil & Distt. Solan (HP) 173212 | Call Us Tollfree: 1800-889-4303

✉ Lab@sharmainfratech.in 🌐 www.sharmainfratech.in